

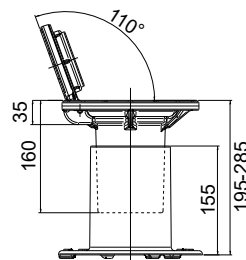
## SELF-LEVELLING SOLUTION

D400

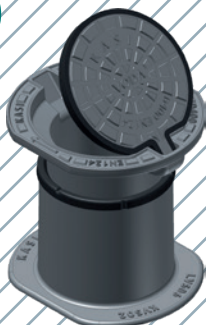
**KVP01**

Cover for house connection valve, suitable for telescopic sets.

Material:	Casting, PUR
Weight:	8 kg

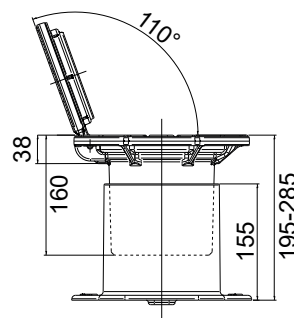


D400

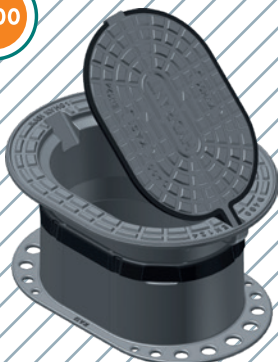
**KVS02**

Cover for gate valve, suitable for fixed sets including JMA.

Material:	Casting, PUR
Weight:	11.5 kg

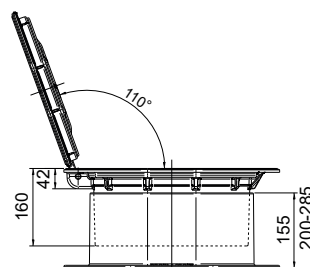


D400

**KVH01**

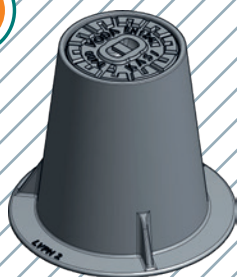
Cover for hydrant Frame can be adjusted so it could be installed altogether with gate valve cover KVS.

Material:	Casting, PUR
Weight:	24 kg



## FIXED SOLUTION

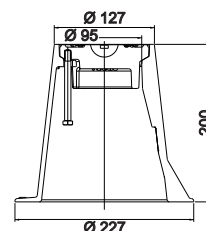
D400



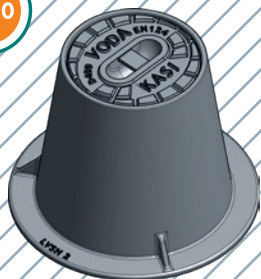
## KVPH1VKA

Fixed cover for house connection valve set.

Material:	Casting
Weight:	8 kg



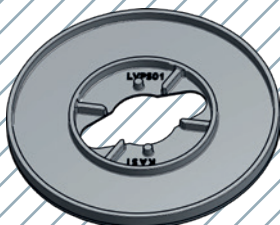
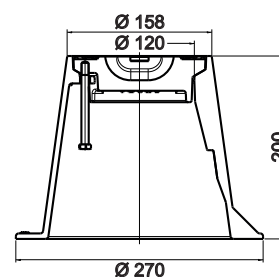
D400



## KVSH1VKA

Fixed cover for gate valve set.

Material:	Casting
Weight:	11 kg



## LVPS01

Plastic base plate for covers KVPH1 and KVSH1.

Material:	PE-HD, glass fiber
Weight:	0.3 kg

