



# RECTANGULAR MANHOLE COVERS

**KASI**

## BIGGEST CZECH PRODUCER OF SEWAGE CAST IRON

KASI, spol. s r.o. was founded in 1992 as an engineering company operating in the field of concrete component production technology. Today, we are one of the most modern European producers of sewer components, supplying the whole of Central and Eastern Europe.

Our product portfolio includes:

- | Shaft covers and gully grates
- | Adjustment rings and street gullies
- | Auxiliary installation material
- | Shaft steps
- | accessories for concrete products

We also offer engineering production and technology for the manufacture of concrete components.

## INNOVATIONS AND NEW TECHNOLOGIES ARE OUR DOMAIN

Our development and testing centre is equipped with the latest technology and equipment. Years of experience in product development and production technology constitute the core know-how that we offer our customers. This guarantees product quality and a flexible response to individual customer requirements. We perform any and all the necessary tests of cast-iron and concrete components, as well as plastics and composites, on our in-house equipment. A test polygon with a swivel arm and a multi-tonne load also allows us to test the covers in real operation.

## IN-HOUSE FOUNDRIES AND CONCRETE PLANT MAKE OUR PRODUCTION INDEPENDENT

Foundries near Nový Bydžov and in Chvaletice, and a concrete plant and engineering production in Přelouč, ensure our manufacturing independence. The facilities are equipped with the latest production technologies, including automated lines and robotic stations.





IN-HOUSE FOUNDRIES  
AND CONCRETE PLANT



EMPHASIS ON TECH-  
NOLOGY AND PRODUCT  
INNOVATION INNOVATION



PRODUCT  
DEVELOPMENT AND  
TESTING



AUTOMATED  
AND OPTIMISED  
PRODUCTION



CUSTOMER-SPECIFIC  
SOLUTIONS

## WE RESPOND FLEXIBLY TO OUR CUSTOMER'S NEEDS

We not only focus on production quality, technology and automation, but also on customer support. We help our clients choose the right product, offer custom-specific solutions, installation and maintenance consultation. We offer covers with the logo of the customer, city or company.

## COVERS WITH YOUR OWN EMBLEM OR LOGO

For cities, sewer operators and other interested parties we offer cast iron shaft covers with their own motif, city emblem, company logo or inscription.

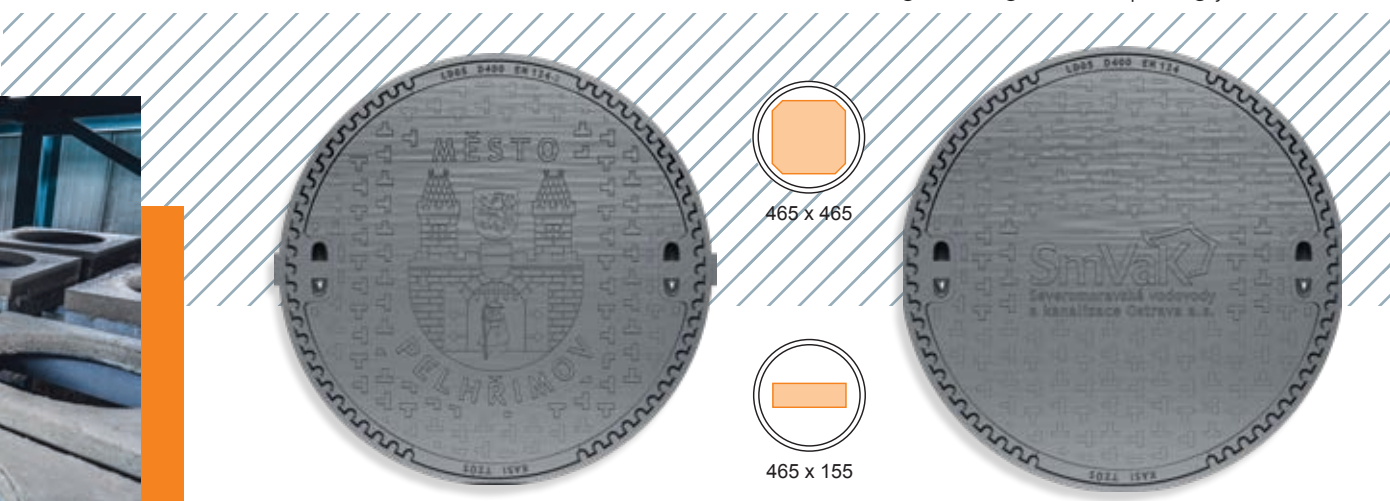
### How to order a cover with your own motif

Contact a KASI dealer.

You will receive a preview of the cover with your chosen motif or text for approval.

Once the order is agreed and sent, the cover will be manufactured.

Sizes of interchangeable segments for placing your own motifs



# RECTANGULAR MANHOLE COVERS

Rectangular sewer manhole covers are designed to cover atypical rectangular openings of pumping sumps, water meter manholes, etc. In load class D400 they are suitable for roads with high traffic loads. The covers meet the requirements of the ČSN EN124-2 standard.

The rectangular sewer manhole covers meet the requirements of the B125 load classes. They are covers that can be operated by 1 person thanks to their simple ergonomic hinged opening. They are secured by their own weight with a PUR damping insert on the frame with no locking option.

- | easy ergonomic opening
- | PUR damping insert
- | operated by 1 person
- | tilting without safety lock

B125

Rectangular manhole covers meet the requirements of load classes D400 and E600. They are suitable for roads with high traffic load. The covers are not equipped with hinges.

- | PUR damping insert
- | lids secured by their own weight
- | D400-E600 loads
- | suitable for heavy traffic

D400

E600

# RECTANGULAR WATERTIGHT COVERS

Manhole covers suitable for tunnels, places with guaranteed water and gas tightness. In load class E600 suitable for roads with high traffic loads.

Watertight covers have pressure resistance of 2 bar and are also gas-tight. They can be used in any traffic load and meet the requirements for use in tunnels (preventing the spread of fire and flammable substances). The design prevents arbitrary loosening of the locking screws and thus minimises maintenance requirements. The locking system is designed in such a way that even if the fasteners are damaged, they can be easily replaced without loss of watertightness.

- | pressure resistance 2 bar
- | tunnel design (non-flammable material)
- | suitable for any traffic load
- | no risk of loosening screws
- | easy replacement of the screw lock



C250  
E600



**COVERING OF RECTANGULAR MANHOLES  
AND INLETS**

**COMPLETELY WATERTIGHT EVEN  
IN THE HEAVIEST TRAFFIC LOADS**

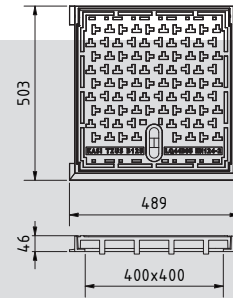
# CAST IRON FRAME

## CAST IRON COVER



KQ44BB05

- | EN 124-2 standard
- | Height 46 mm



	CODE	SCREW LOCK	WEIGHT	NOTE
<b>400 x 400</b>	KQ44BB05	NE	26 kg	

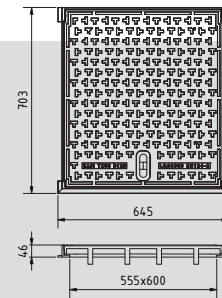
# CAST IRON FRAME

## CAST IRON COVER



KQ66BB05

- | EN 124-2 standard
- | Height 46 mm



	CODE	SCREW LOCK	WEIGHT	NOTE
<b>600 x 600</b>	KQ66BB05	NE	42 kg	

B125 – 400 x 400, 600 x 600

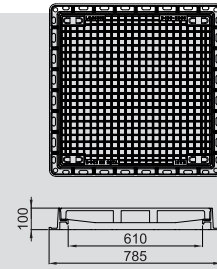
# CAST IRON FRAME

## CAST IRON COVER



KQ66EL05C

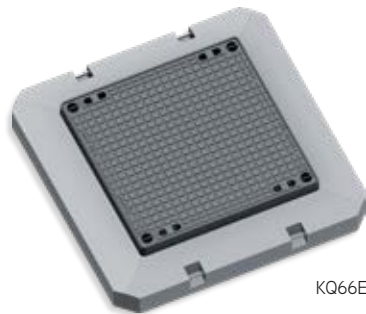
- | EN 124-2 standard
- | Height 100 mm
- | Packaging of 10 pcs/pallet



	CODE	SCREW LOCK	WEIGHT	NOTE
600 x 600	KQ66EL05C	NE	100 kg	
	KQ66EL05CS	ANO	100 kg	
	KQ66EL0MC	NE	95 kg	MŘÍŽ

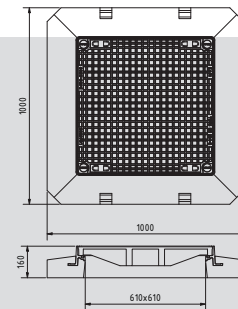
# FRAME DISTRIBUTION

## CAST IRON COVER



KQ66EI05C

- | EN 124-2 standard
- | Height 160 mm
- | Packaging of 6 pcs/pallet



	CODE	SCREW LOCK	WEIGHT	NOTE
600 x 600	KQ66EI05C	NE	244 kg	
	KQ66EI05CS	ANO	244 kg	
	KQ66EI0MC	NE	239 kg	MŘÍŽ

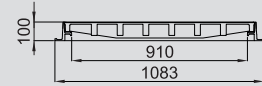
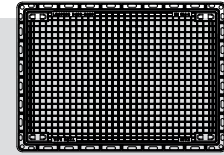
# CAST IRON FRAME

## CAST IRON COVER



KQ69EL05CS

- | EN 124-2 standard
- | Height 100 mm
- | Packaging of 8 pcs/pallet



	CODE	SCREW LOCK	WEIGHT	NOTE
600 x 900	KQ69EL05C	NE	138 kg	
	KQ69EL05CS	ANO	138 kg	

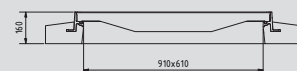
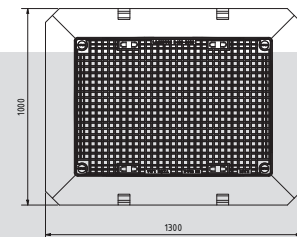
# FRAME DISTRIBUTION

## CAST IRON COVER



KQ69EI05C

- | EN 124-2 standard
- | Height 160 mm
- | Packaging of 3 pcs/pallet

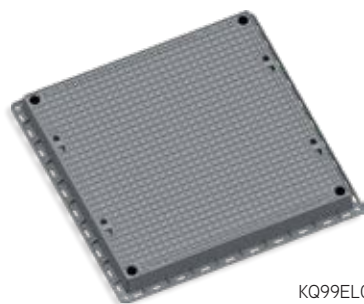


	CODE	SCREW LOCK	WEIGHT	NOTE
600 x 900	KQ69EI05C	NE	305 kg	
	KQ69EI05CS	ANO	305 kg	



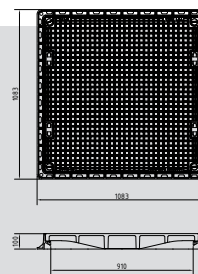
# CAST IRON FRAME

## CAST IRON COVER



KQ99EL05CS

- | EN 124-2 standard
- | Height 100 mm
- | Packaging of 6 pcs/pallet



	CODE	SCREW LOCK	WEIGHT	NOTE
900 x 900	KQ99EL05CS	ANO	178 kg	

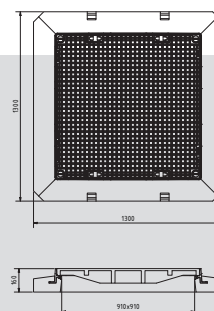
# FRAME DISTRIBUTION

## CAST IRON COVER



KQ99EI05CS

- | EN 124-2 standard
- | Height 160 mm
- | Packaging of 3 pcs/pallet



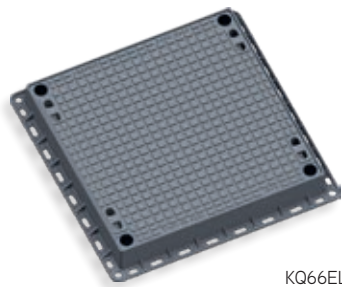
	CODE	SCREW LOCK	WEIGHT	NOTE
900 x 900	KQ99EI05CS	ANO	372 kg	

E600 – 900 x 900

# CAST IRON FRAME

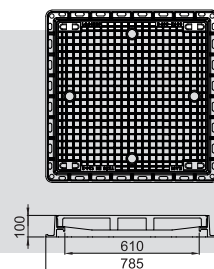
## CAST IRON COVER

**WATERPROOF** 600  
x  
600 E600



KQ66ELV05CS

- | EN 124-2 standard
- | Height 100 mm
- | Packaging of 10 pcs/pallet

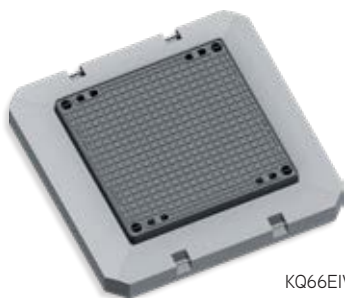


	CODE	SCREW LOCK	WEIGHT	NOTE
<b>600 x 600</b>	KQ66ELV05CS	ANO	100 kg	

# FRAME DISTRIBUTION

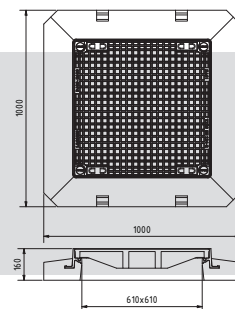
## CAST IRON COVER

600  
x  
600 E600



KQ66EIV05CS

- | EN 124-2 standard
- | Height 160 mm
- | Packaging of 6 pcs/pallet



	CODE	SCREW LOCK	WEIGHT	NOTE
<b>600 x 600</b>	KQ66EIV05CS	ANO	100 kg	

# CAST IRON FRAME

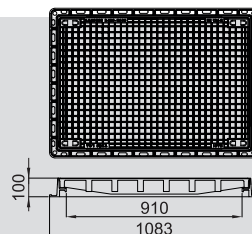
## CAST IRON COVER

600  
x  
900 E600



KQ69ELV05CS

- | EN 124-2 standard
- | Height 100 mm
- | Packaging of 8 pcs/pallet



	CODE	SCREW LOCK	WEIGHT	NOTE
<b>600 x 900</b>	KQ69ELV05CS	ANO	138 kg	

E600 – 600 x 600, 600 x 900

# FRAME DISTRIBUTION

**WATERPROOF**

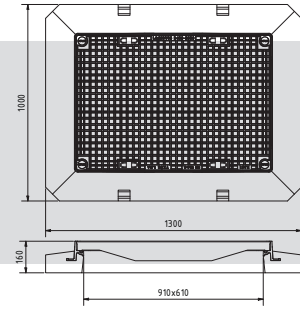


## CAST IRON COVER



KQ69EIV05CS

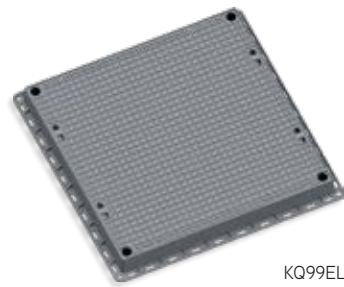
- | EN 124-2 standard
- | Height 160 mm
- | Packaging of 3 pcs/pallet



	CODE	SCREW LOCK	WEIGHT	NOTE
<b>600 x 900</b>	KQ69EIV05CS	ANO	138 kg	

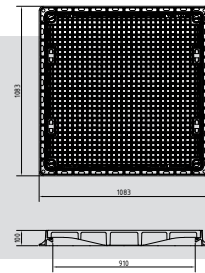
# CAST IRON FRAME

## CAST IRON COVER



KQ99ELV05CS

- | EN 124-2 standard
- | Height 100 mm
- | Packaging of 6 pcs/pallet



	CODE	SCREW LOCK	WEIGHT	NOTE
<b>900 x 900</b>	KQ99ELV05CS	ANO	178 kg	

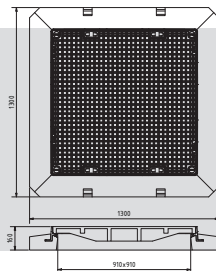
# FRAME DISTRIBUTION

## CAST IRON COVER



KQ99EIV05CS

- | EN 124-2 standard
- | Height 160 mm
- | Packaging of 3 pcs/pallet



	CODE	SCREW LOCK	WEIGHT	NOTE
<b>900 x 900</b>	KQ99EIV05CS	ANO	178 kg	

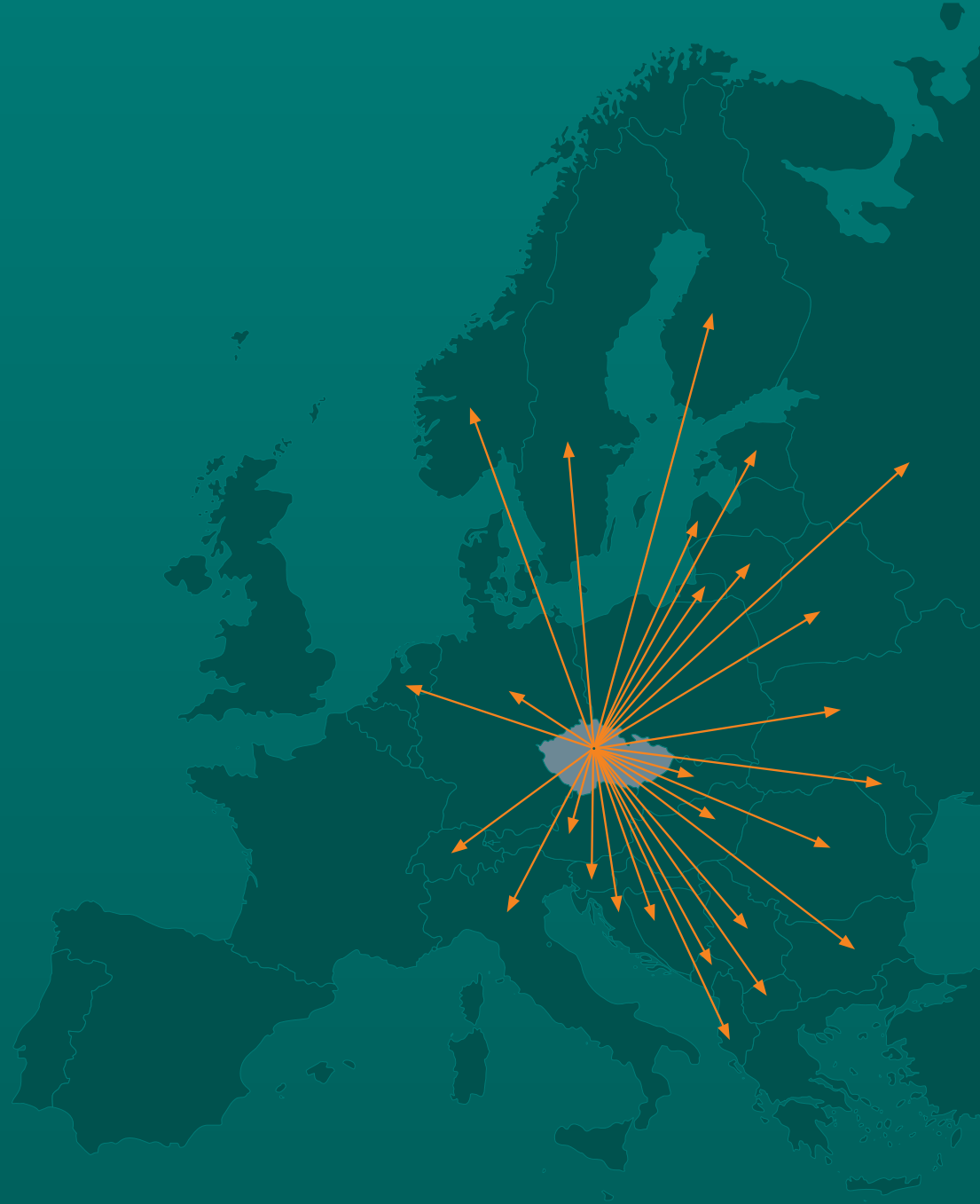
E600 – 600 x 900, 900 x 900



**KASI, spol. s r.o.**

Chrudimská 1602  
Přelouč 535 01  
Czech Republic  
Phone: +420 466 501 755  
e-mail: [export@kasi.cz](mailto:export@kasi.cz)

**[www.kasi.cz](http://www.kasi.cz)**



The KASI catalogue range also includes:

- Manhole covers STANDARD and Adjustment rings
- Manhole covers EUROPA
- Recommended products
- Leaflet containing accessories and installation aids
- Street gullies and gully grates
- Bridge drainage
- Manhole steps

